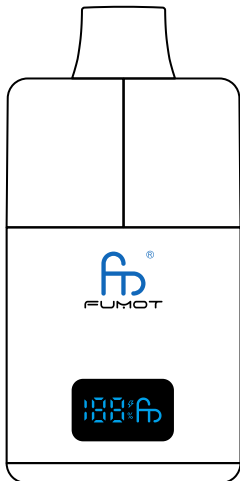




FUMOT Spirit 25K

User Manual



WARNING:

- This product is strictly intended for adult smokers only and is not suitable for children or non-smokers.
- The use of this product by children, pregnant or nursing women is particularly discouraged.

Before You Begin:

Thoroughly read this manual before using this product and retain it for future reference.

Potential Contraindications:

- **Propylene Glycol:**
 - May cause adverse effects in individuals undergoing treatment with disulfiram or metronidazole.
 - Individuals with a history of atopy, childhood eczema, or rhinitis (hay fever) may experience allergic reactions.
 - Risk of lactic acidosis in children, pregnant women, or those with liver or kidney dysfunction from ingestion of large amounts.
- **Glycerol:**
 - The elderly and those who are already dehydrated are at an increased risk of dehydration.
 - Individuals with diabetes should exercise caution, as glycerol metabolism may lead to minor hyperglycemia or glycosuria.

Possible Adverse Effects:

- First-time users of electronic cigarettes may experience mouth irritation, dry throat, or coughing. If symptoms persist beyond 48 hours or worsen, consult a healthcare professional and follow the guidance provided under 'Reporting Adverse Effects'.
- Nicotine withdrawal symptoms may occur if the product does not meet your nicotine needs. These can include irritability, aggression, depression, anxiety, restlessness, poor concentration, increased appetite, cravings for tobacco, sleep disturbances, or a decrease in heart rate.

Reporting Adverse Effects:

- If you experience any side effects from using this product, please report them to the local regulatory authority. You can also register a safety concern with the competent authority within your country.

Addictiveness:

- This product contains nicotine, which is highly addictive. It is not recommended for those who do not currently smoke. No other ingredients in this product are known to be addictive.

Toxicity:

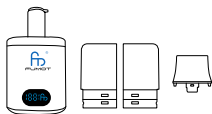
- This product contains nicotine, which can be toxic if ingested, especially by children. Do not consume the liquid. In case of ingestion, immediately visit your healthcare professional with this manual. If the liquid comes into contact with the skin, rinse the area with cold water for 10-15 minutes.

Usage Guidelines:

1. Ensure you are of legal smoking age in your jurisdiction.
2. Check the product for any damage before use; do not use if damaged.
3. Follow charging and maintenance instructions for safe operation.
4. Avoid excessive vaping, which may lead to discomfort.
5. Do not use this product if you are allergic to nicotine or any ingredients.
6. This product is not intended as a smoking cessation aid and should not be used as part of a nicotine replacement therapy.

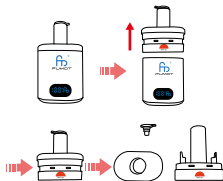
HOW TO USE

1



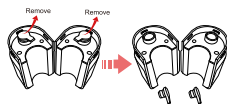
Remove the device from the candy pouch.

2



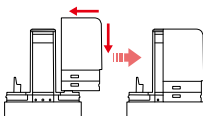
Pull the 2ml pod up and remove the black silicone plugs from the 2ml pod center post and the e-liquid pilot hole.

3



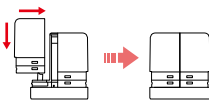
Separately remove 2 separate 10ml pod of the same flavor from the candy pouch and remove the silicone plugs from the bottom of the pod.

4



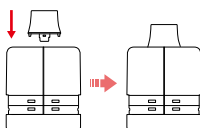
Align and install the right 2ml pod center post to the 10ml e-liquid pod. Press down for assembly to complete.

5



Repeat step 4 to install the left 10ml pod with 2ml pod in place.

6



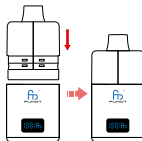
Remove the drip tip, align it with the top of the pod and press the drip tip into the 2ml pod center post, drip tip assembly is complete.

7



Remove the bottom insulating sticker from the pod.

8



Insert the assembled pod into the device, then you are good to enjoy vaping.

STORAGE AND MAINTENANCE

- Store the product at a temperature between 10-25°C and out of direct sunlight.
- Do not refrigerate, freeze, heat, or store the product at a temperature above 30°C.
- Do not rinse or immerse the product.
- Keep the product and all accessories out of reach of children.

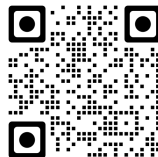
Contact Information:

For any inquiries or further assistance, please contact our customer service department.
Email: info@sfzumotvape.com

Manufactured by:

Shenzhen Fumot Technology Co., Ltd
Email: wholesale@sfzumotvape.com
 2nd floor, building 6, Haomai industrial zone,
 Dalang street, Longhua district, Shenzhen China.
 Copyright © 2024, fz All Rights Reserved.
 +86 188 2091 3273
www.szfumotvape.com

Thank you for choosing our product. Please enjoy your vaping experience responsibly.



www.szfumotvape.com

